

DNA Control UV

REF 05-7302

INTENDED USE

DNA Control UV are fixed and fluorescently labelled red blood cells from trout (trout erythrocytes). The material is characterised by the homogeneous fluorescent staining of cell nuclei. Same cells are presented as single cells but also as aggregates of two, three and more individuals. Therefore *DNA Control UV* is well suited to align the instrument in order to set-up the device for high analysing resolution and linearity.

KIT COMPONENTS

Packing contains:

- 25 ml *DNA Control UV*

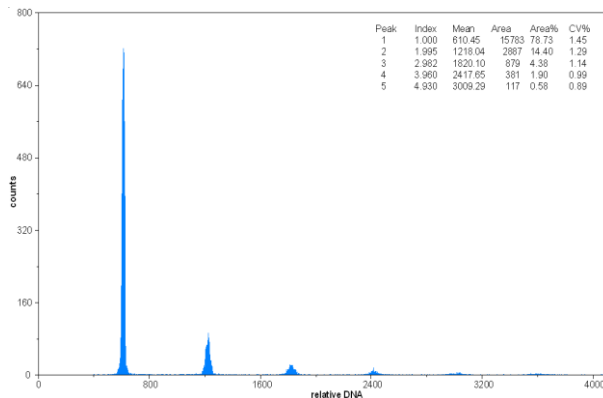
INSTRUCTIONS

For instrument alignment and quality control, please refer to the IFU of your Flow Cytometer.

- mix bottle well before use (do not vortex)
- transfer about 1 ml of *DNA Control UV* into a sample tube, avoid air bubbles
- plug sample tube to the sample port of the flow cytometer and start measurement

Instrument requirements:

A flow cytometer with UV light source and a blue fluorescence detection parameter.



DNA Control UV analysed on a Partec CyFlow[®] space flow cytometer with fluorescent excitation by a UV-LED with 365 nm light emission

Linearity:

The ratio of the mean peak positions of the different levels of aggregation deliver information on the instruments linearity. This ratio is indicated in the peak statistics of the flow cytometer. The theoretically expected index for peak 2 is 2.000, for peak 3 3.000 and so on. The difference between measured and expected indices of peak 2 and 3 (2.000 and 3.000 respectively) should not exceed 2 %, i.e. 2.040 for peak no. 2.

DNA Control UV as external reference material:

Use *DNA Control UV* to adjust a target channel specific for your sample by changing the gain value. Check target channel setting regularly with trout erythrocytes and re-adjust in case of peak shift by changing the gain value.

PRECAUTIONS

DNA Control UV contains Formaldehyde. Formaldehyde is toxic, allergenic and is known to cause cancer. Use only in well-ventilated areas or under a fume hood. Use protective gloves, eye protection and protective clothing when handling. Avoid contact with eyes, skin or clothing. In case of accidental contact with eyes or skin, flush with plenty of water. Contact a medical doctor if exposure symptoms develop. Inhalation or ingestion is harmful. If swallowed, induce vomiting and contact a medical doctor immediately. Refer to the Material Safety Data Sheet for additional information.

STORAGE AND STABILITY

Storage: 18-25°C in the dark
 Shelf life: Please refer to the expiry date, labeled on the bottle.

DISPOSAL PROCEDURE

Disposal procedure should meet requirements of applicable local regulations.

MANUFACTURER

Sysmex Partec GmbH
 Am Flugplatz 13
 02828 Görlitz
 Germany