

**DNA Control PI**

**REF 05-7303**

**INTENDED USE**

*DNA Control PI* are fixed and propidium iodide labelled red blood cells from trout (trout erythrocytes). The material is characterised by the homogeneous fluorescent staining of cell nuclei. Same cells are presented as single cells but also as aggregates of two, three and more individuals. Therefore *DNA Control PI* is well suited to align the instrument in order to set-up the device for high analysing resolution and linearity.

**KIT COMPONENTS**

Packing contains:

- 25 ml *DNA Control PI*

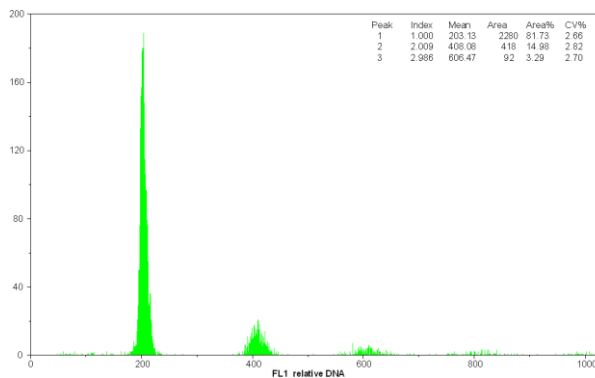
**INSTRUCTIONS**

For instrument alignment and quality control, please refer to the IFU of your Flow Cytometer.

- mix bottle well before use (do not vortex)
- transfer about 1 ml of *DNA Control PI* into a sample tube, avoid air bubbles
- plug sample tube to the sample port of the flow cytometer and start measurement

**Instrument requirements:**

A flow cytometer with blue or green laser light excitation and a red fluorescence emission detecting parameter.



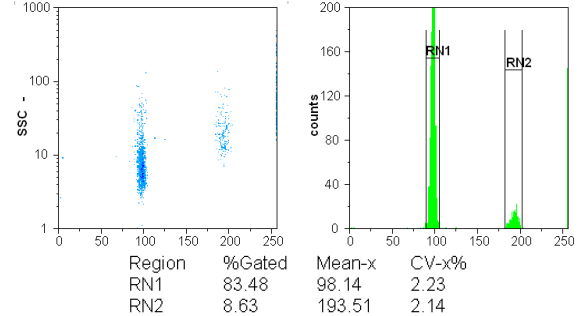
*DNA Control PI* analysed on a *CyFlow<sup>®</sup> SL* with 532 nm laser excitation

**Linearity:**

The ratio of the mean peak positions of the different levels of aggregation deliver information on the instruments linearity. This ratio is indicated in the peak statistics of the flow cytometer. The theoretically expected index for peak 2 is 2.000, for peak 3 3.000 and so on. The difference between measured and expected indices of peak 2 and 3 (2.000 and 3.000 respectively) should not exceed 2 %, i.e. 2.040 for peak no. 2.

*DNA Control PI* as external reference material:

Use *DNA Control PI* to adjust a target channel specific for your sample by changing the gain value. Check target channel setting regularly with trout erythrocytes and re-adjust in case of peak shift by changing the gain value.



*Partec DNA Control PI* analysed on a *CyFlow<sup>®</sup> space* with 532 nm laser

**PRECAUTIONS**

*DNA Control PI* contains Formaldehyde. Formaldehyde is toxic, allergenic and is known to cause cancer. Use only in well-ventilated areas or under a fume hood. Use protective gloves, eye protection and protective clothing when handling. Avoid contact with eyes, skin or clothing. In case of accidental contact with eyes or skin, flush with plenty of water. Contact a medical doctor if exposure symptoms develop. Inhalation or ingestion is harmful. If swallowed, induce vomiting and contact a medical doctor immediately. Refer to the Material Safety Data Sheet for additional information.

**STORAGE AND STABILITY**

Storage: 18-25°C in the dark  
 Shelf life: Please refer to the expiry date, labeled on the bottle.

**DISPOSAL PROCEDURE**

Disposal procedure should meet requirements of applicable local regulations.



MANUFACTURER  
Sysmex Partec GmbH  
Am Flugplatz 13  
02828 Görlitz  
Germany